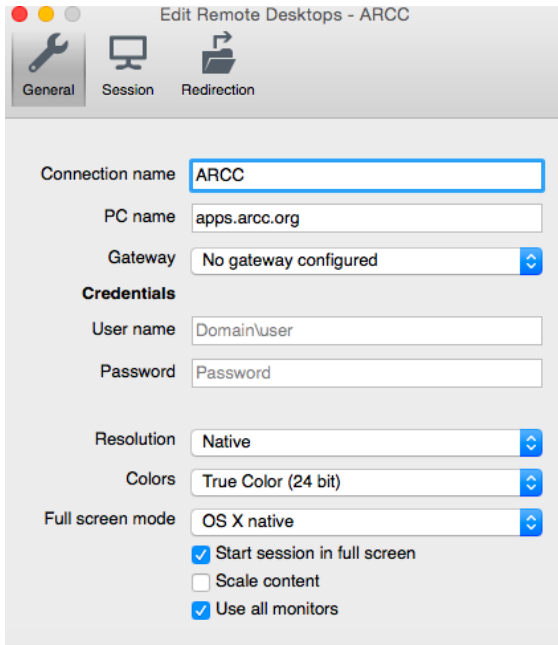
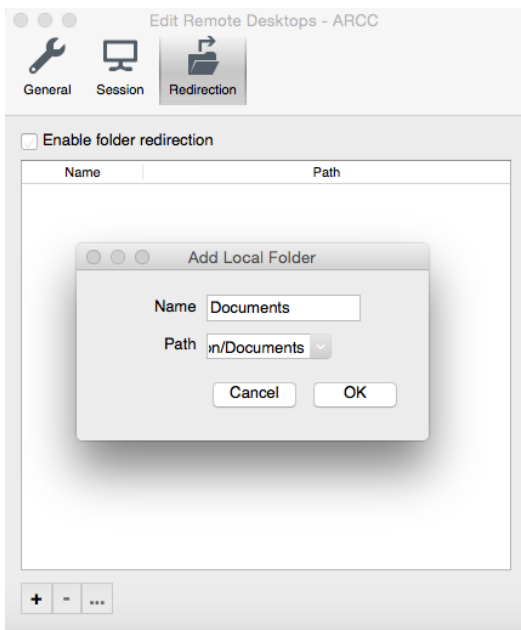


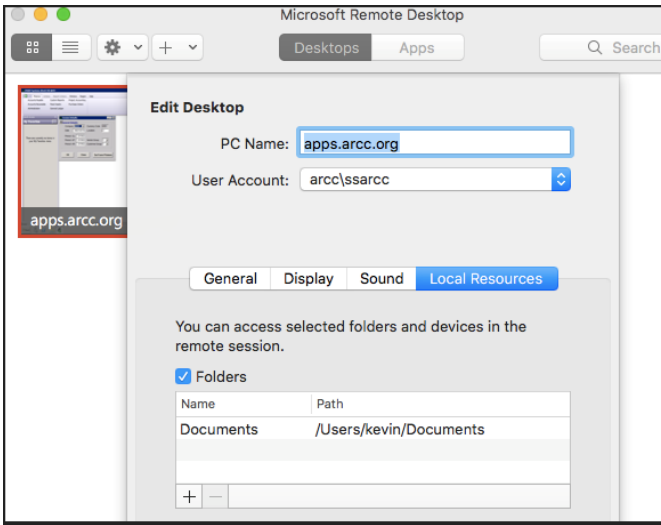
## Configuring and using the Microsoft Remote Desktop application for Macintosh

- 1) Open the Microsoft Remote Desktop application
  - Enter a Connection name like ARCC or ARCC-VPN for VPN connections.
  - In the PC name enter apps.arcc.org (or 10.1.0.99 for VPN connections)
  - If you wish to use the application in non full screen mode uncheck 'start session in full screen' and check 'scale content'



- 2) If you are planning on saving files to your local workstation go to redirection tab and hit the + at the bottom left of the screen. Browse for a desired local path and hit OK (the redirect path name will then reflect the location chosen). On the 10.x version (second screenshot) the redirection is on a tabbed menu on the main screen, and you still click the + to add a mapping.





3) Close and double click the new connection to connect to ARCC